

# Nuzzle™ Veterinary Array

Get closer to your patient™



## Enhanced Clarity and Diagnostic Precision

Experience unmatched clarity and detail with the Nuzzle™ veterinary array for small and large animal imaging. Our super flex veterinary MR coil achieves impressive temporal and sub-millimeter spatial resolution that sets a new clinical excellence standard.

## Improved Clinical Images

- Adaptable, super-flexible 24-channel two-pad body contouring RF coil for superb high-resolution imaging of organs and neurological anomalies.
- Sub-millimeter spatial resolution for demanding musculoskeletal imaging, providing detailed visualization of joints with fine tissue interfaces.
- High coil density and specialized geometry maximize parallel imaging, significantly improving imaging speed.

## Enhanced Workflow

- 80% lighter compared to conventional coils, making it easier to position.
- One multi-purpose coil that eliminates the need to change coils.
- Flexible coil provides faster throughput that may reduce length of sedation.
- Superior images decrease the need for additional diagnostic procedures.



12-48 channel configurations



Multi-RF functionality



Multi-diagnostic capabilities

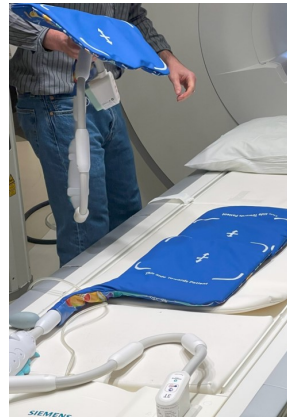


### The flexible MRI veterinary coil

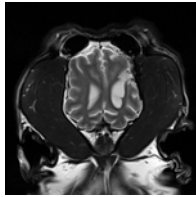
Comes with two, 12-channel pads. Allows for quick and easy patient setup. Nuzzle's™ dense coil element construction provides full scan acceleration by harnessing the signal from all coil elements.

### Unparalleled configuration versatility with 12-48 channel configurations

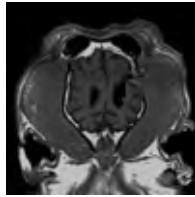
One versatile veterinary array can image soft tissue diseases, ligament and meniscus injuries, cranial and vertebral anomalies, and muscular diseases.



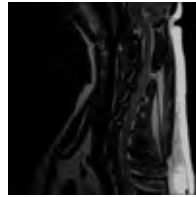
009Y - Brain - Dorsal T2



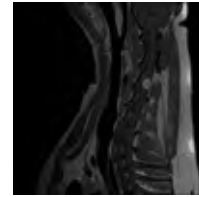
009Y - Brain - Dorsal T1 Flair Post Contrast



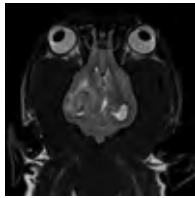
007Y - Cervical Spine - Sagittal T2



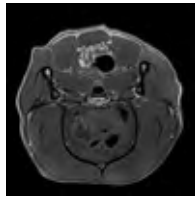
007Y - Cervical Spine - Sagittal T1 Post Contrast



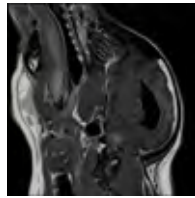
009Y - Brain - Dorsal T2



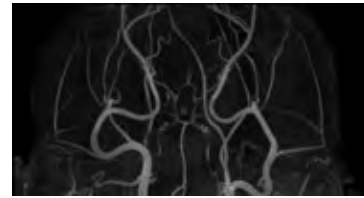
009Y - Brain - Axial T1 FLAIR Post Contrast



008Y - Brain - Sagittal T1 FLAIR Post Contrast



009Y - Brain Time of Flight MR Angiography



### Technical Specifications

- Coil includes two 12 channel pads
- Field Strength 3.0 Tesla
- Product Weight Pad 0.8 lbs. (total weight with cable – 3.3 lbs.)
- Pad Size 15.0 in. x 11.4 in.
- Thickness 0.6 in. to 1.3 in.
- Imaging Area 10.5 in. x 11.4 in.
- Number of Elements 24 channels (12 channels per pad)
- Cable Length 55 in.
- Model Number VET24SH30A
- Print Design Whimsical
- MRI System Compatibility

