

Silhouette™ Featherlight Adult Super Flex MR Coil

Get Closer to your Patient™

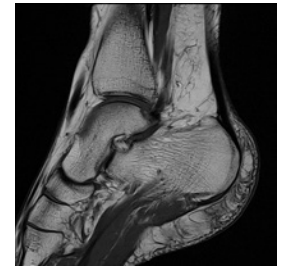


Enhanced Clarity and Diagnostic Precision

Experience unmatched clarity and detail. With its high coil density, our adult super flex MR coil achieves impressive temporal and sub-millimeter spatial resolution, setting a new clinical excellence standard.

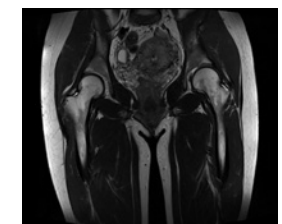
Improved Clinical Images

- Adaptable, super-flexible 24-channel body contouring coil improves SNR.
- Sub-millimeter spatial resolution for demanding musculoskeletal imaging of joints with fine tissue interfaces.
- High coil density and specialized geometry maximizes parallel imaging to improve imaging speed over conventional coils.



Improved MR Technologist Workload

- Lightweight flexible design allows higher focus on the patient.
- Easy to handle and fast setup increases patient throughput.
- Pliable MR coil contours to a variety of anatomies.



Improved Patient Experience

- 80% lighter coil is blanket-like, not rigid, and less restraining.
- Faster throughput can reduce risk of motion and need to repeat scans.
- Superior images decrease the need for additional diagnostic procedures.

Unparalleled configuration versatility

Choose from 12-48 channel configurations



Technical Specifications

Field strength	3.0 Tesla	1.5 Tesla
Coil	Two 12 channel pads	Two 12 channel pads
Product weight of pad	0.8 lbs.	0.8 lbs.
Product weight with cable	3.3 lbs.	3.0 lbs.
Pad size	15.0 in x 11.4 in	15.0 in x 11.4 in
Pad thickness	0.6 in. to 1.3 in.	0.6 in. to 1.3 in.
Imaging area	10.5 in. x 11.4 in.	10.5 in. x 11.4 in.
Number of elements	24 channels (12 channels per pad)	24 channels (12 channels per pad)
Cable length	55 in.	53 in.
Product model number	SBA24SH30C	SBA24SH15C
Print design	Cherry Blossom	Cherry Blossom
MRI system compatibility		

