

Nuzzle™ Veterinary Array

Get closer to your patient™



Enhanced Clarity and Diagnostic Precision

Experience unmatched clarity and detail with the Nuzzle™ veterinary array for small and large animal imaging. Our super flex veterinary MR coil achieves impressive temporal and sub-millimeter spatial resolution that sets a new clinical excellence standard.

Improved Clinical Images

- Adaptable, super-flexible 24-channel two-pad body contouring RF coil for superb high-resolution imaging of organs and neurological anomalies.
- Sub-millimeter spatial resolution for demanding musculoskeletal imaging, providing detailed visualization of joints with fine tissue interfaces.
- High coil density and specialized geometry maximize parallel imaging, significantly improving imaging speed.

Enhanced Workflow

- 80% lighter compared to conventional coils, making it easier to position.
- One multi-purpose coil that eliminates the need to change coils.
- Flexible coil provides faster throughput that may reduce length of sedation.
- Superior images decrease the need for additional diagnostic procedures.



12-48 channel configurations



Multi-RF functionality



Multi-diagnostic capabilities

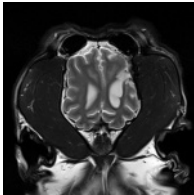


The flexible MRI veterinary coil

Comes with two, 12-channel pads allow for quick and easy patient setup. Nuzzle's™ dense coil element construction provides full scan acceleration by harnessing the signal from all coil elements.

Unparalleled configuration versatility. Choose from 12-48 channel configurations. One versatile veterinary array can image soft tissue diseases, ligament and meniscal injuries, cranial and vertebral anomalies, assess brachial plexus and muscular diseases.

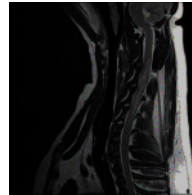
009Y - Brain - Dorsal T2



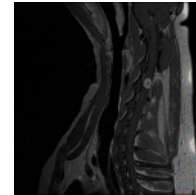
009Y - Brain - Dorsal T1 Flair Post Contrast



007Y - Cervical Spine - Sagittal T2



007Y - Cervical Spine - Sagittal T1 Post Contrast



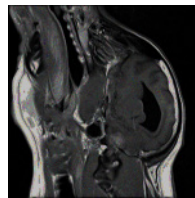
009Y - Brain - Dorsal T2



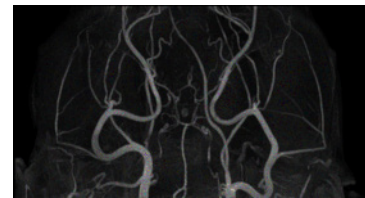
009Y - Brain - Axial T1 FLAIR Post Contrast



008Y - Brain - Sagittal T1 FLAIR Post Contrast



009Y - Brain Time of Flight MR Angiography



Technical Specifications

Field strength	3.0 Tesla	1.5 Tesla
Coil	Two 12 channel pads	Two 12 channel pads
Product weight of pad	0.8 lbs.	0.8 lbs.
Product weight with cable	3.3 lbs.	3.0 lbs.
Pad size	15.0 in x 11.4 in	15.0 in x 11.4 in
Pad thickness	0.6 in. to 1.3 in.	0.6 in. to 1.3 in.
Imaging area	10.5 in. x 11.4 in.	10.5 in. x 11.4 in.
Number of elements	24 channels (12 channels per pad)	24 channels (12 channels per pad)
Cable length	55 in.	53 in.
Product model number	SBA24SH30A	SBA24SH15C
Print design	Whimsical	Whimsical
MRI system compatibility		

