

# Silhouette™ Featherlight Adult Super Flex MR Coil

Get Closer to your Patient™

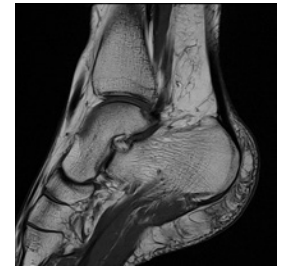


## Enhanced Clarity and Diagnostic Precision

Experience unmatched clarity and detail. With its high coil density, our adult super flex MR coil achieves impressive temporal and sub-millimeter spatial resolution, setting a new clinical excellence standard.

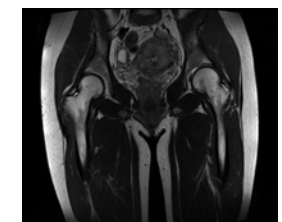
## Improved Clinical Images

- Adaptable, super-flexible 24-channel body contouring coil improves SNR.
- Sub-millimeter spatial resolution for demanding musculoskeletal imaging of joints with fine tissue interfaces.
- High coil density and specialized geometry maximizes parallel imaging to improve imaging speed over conventional coils.



## Improved MR Technologist Workload

- Lightweight flexible design allows higher focus on the patient.
- Easy to handle and fast setup increases patient throughput.
- Pliable MR coil contours to a variety of anatomies.



## Improved Patient Experience

- 80% lighter coil is blanket-like, not rigid, and less restraining.
- Faster throughput can reduce risk of motion and need to repeat scans.
- Superior images decrease the need for additional diagnostic procedures.

## Unparalleled configuration versatility Choose from 24-48 channel configurations



### Technical Specifications

- Coil includes two 12 channel pads
- Field Strength 3.0 Tesla
- Product Weight Pad 0.8 lbs. (total weight with cable – 3.3 lbs.)
- Pad Size 15.0 in. x 11.4 in.
- Thickness 0.6 in. to 1.3 in.
- Imaging Area 10.5 in. x 11.4 in.
- Number of Elements 24 channels (12 channels per pad)
- Cable Length 55 in.
- Model Number SBA24SH3C
- Print Design Cherry Blossom
- MRI System Compatibility

